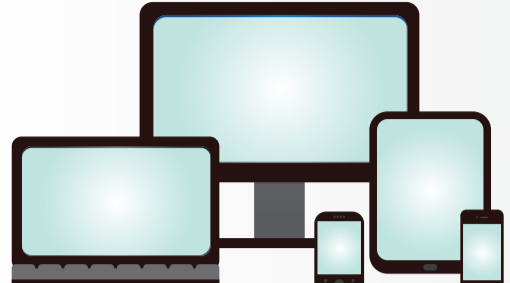


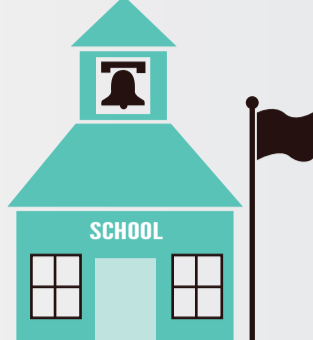
# HOW TO IMPLEMENT BLENDED LEARNING

Schools that make the most effective use of new technology will incorporate an intentional shift to online delivery for a portion of the day to make learning more efficient, effective, and engaging. Implementing blended learning is a complex project that changes roles, structures, schedules, staffing patterns, and budgets.

## BLENDED LEARNING IS...



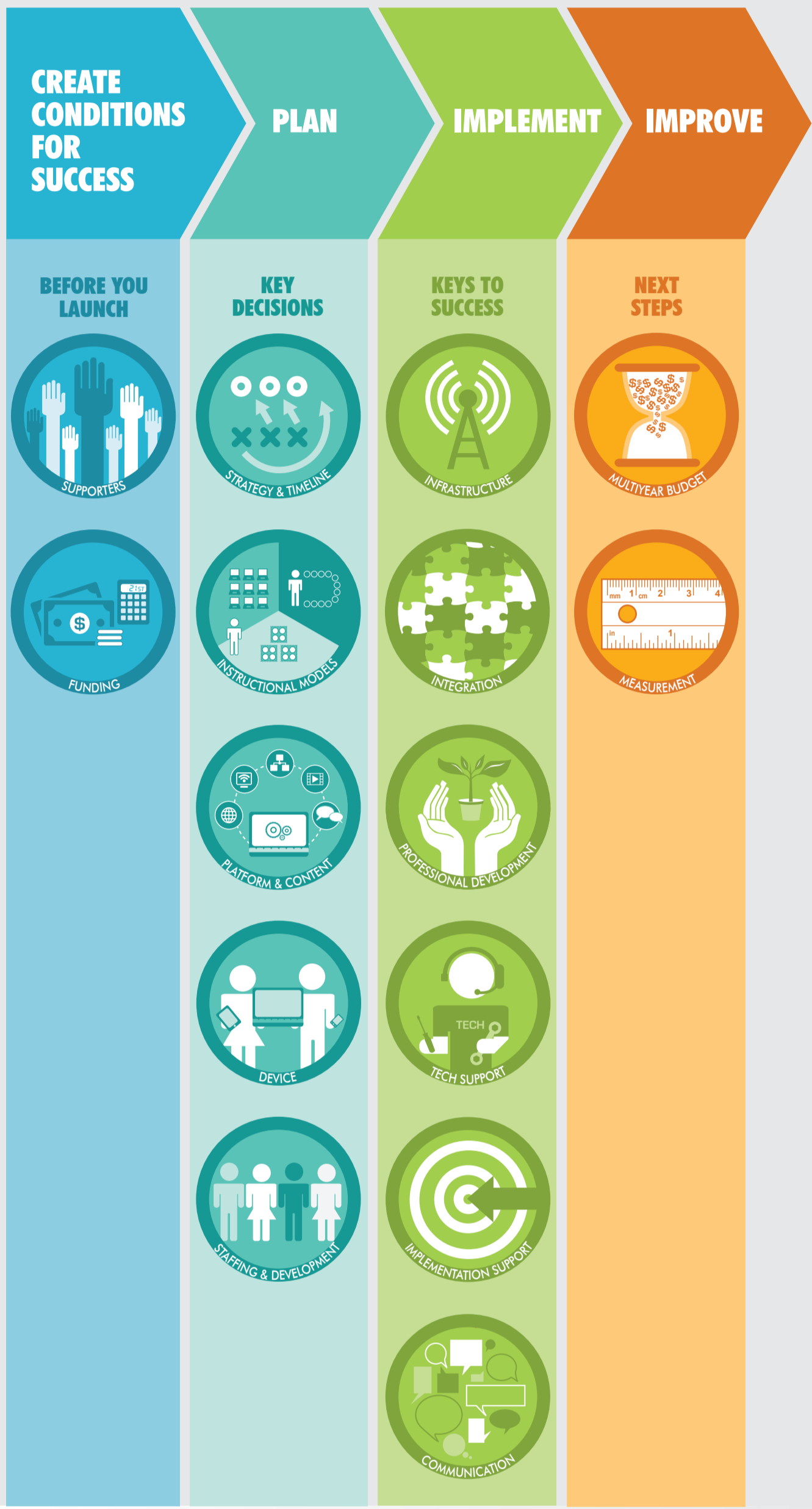
a formal education program in which a student learns at least in part through online delivery of content and instruction with some element of student control over time, place, path, and/or pace



at least in part at a supervised brick-and-mortar location away from home

A shift to online delivery for a portion of the day to make students, teachers and schools more productive. Learning in multiple modalities yields more and better data that creates an integrated and customizable learning experience.

## THE PROCESS



Given the complexity of available choices, leaders should:

- 1 Start with learning goals
- 2 Decide on platform and content second
- 3 Choose devices third

### TOP FEATURES OF A BLENDED LEARNING PLATFORM

- Content and apps aligned with CCSS
- Standards-aligned assessments and performance tasks
- Comprehensive learner profiles including portfolios of student work
- Recommendation engines that consider learning level, student performance, and best learning modality
- Service economy including student, teacher, and school services
- Reporting functionality that provides actionable information and tools to manage a competency-based learning environment



### STEPS IN THE RIGHT DIRECTION

Increasing student opportunities to engage with technology -- such as teachers using flipped classroom strategies, a school computer lab, and computers using digital curriculum in the classroom - are a step in the right direction, but don't meet the full potential of blended learning. If it doesn't change instructional practices, schedules, relationships and resources allocations,

**THERE'S STILL ROOM TO GROW!**

## 10 DRIVERS OF BLENDED LEARNING



- 1 Improve ability to personalize learning
- 2 Potential for individual progress
- 3 Improve student engagement and motivation
- 4 Shift to online state tests starting in 2015
- 5 Need to extend time and stretch resources
- 6 Potential to extend the reach of effective teachers
- 7 Ability to improve working conditions
- 8 Decrease device costs
- 9 Student and parent adoption of learning apps
- 10 Interest in narrowing the digital divide

### GET BLENDED!

Blended learning is more than electronic textbooks and productivity tools. It means inventing or adopting new learning environments that work better for students and teachers. School and district leaders need to lead a community conversation that results in decisions on strategy, model, platform, device, and staffing to develop integrated plans for teaching and learning, information technology, finance, and communications. These conversations should be driven by the desire to expand blended learning as a key part of the system-wide evolution to more personalized, competency-based learning opportunities. This graphic is version 1.0 of what we hope will be a collaborative process as blended learning implementation continues to grow.



Download Report  
The Blended Learning Implementation Guide  
<http://digitalllearningnow.com/dln-smart-series/>

Twitter  
Digital Learning Now! (@DigLearningNow)  
Foundation for Excellence in Education (@ExcellinEd)  
Getting Smart® (@Getting\_Smart)  
DLN Smart Series #smartseries



DIGITAL LEARNING NOW!