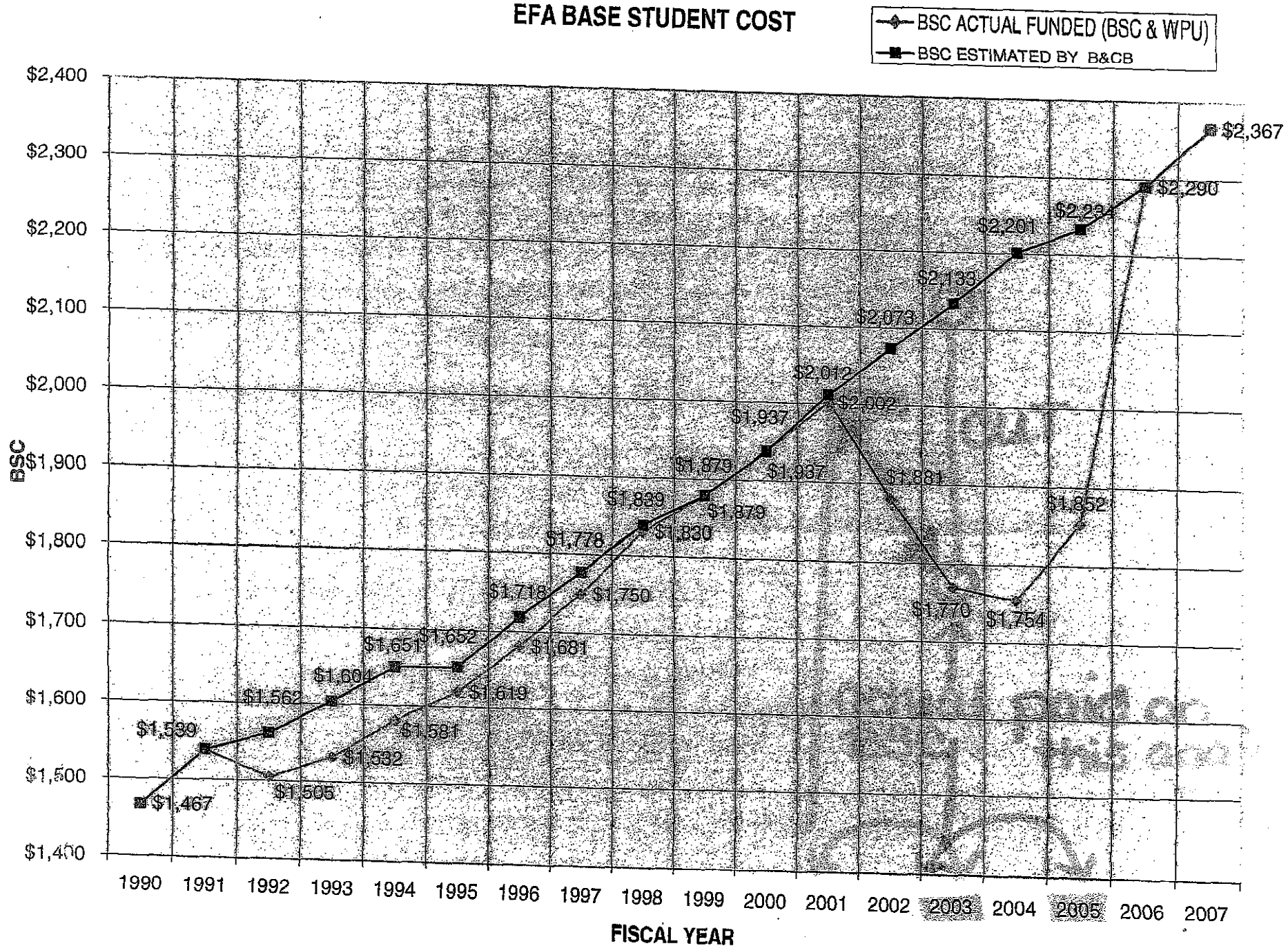


# State Budget Cuts in 2004

- In January 2004 (2003-2004 school year) there was an immediate state budget cut for the Base Student Cost from \$2,201 to \$1,754. The money for that cut was immediately deducted from the charter schools base student allocation for that school year.
- After the 135<sup>th</sup> day for the 2005-2006 school year, charter schools were paid based on the 2004 audit which was the Base Student Cost that had been reduced.
- Charter schools should not have been effected since they were being paid from the 2002 audit for which the Base Student Cost was \$1,881.
- Charter schools were pre-maturely effected by the state budget cuts since these same cuts were faced again in the 2005-2006 school year.
- The effect on MVP -\$37,561.08!

# EFA BASE STUDENT COST



Midland Valley Preparatory  
School  
2432-A Jefferson Davis Highway  
Graniteville, SC 29829  
Phone: (803) 594-1028  
Fax: (803) 594-0511



South Carolina Charter School

---

*"When it comes to a child's education - failure is not an option!"* - President George W. Bush

---

4/25/2006

Mellanie Jinnette  
SCDE - Finance Office  
1429 Senate Street  
Columbia, SC 29201

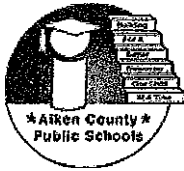
Mellanie,

I enjoyed your class during the South Carolina Charter School Conference in Myrtle Beach. It was very informative and judging from some of the responses from other operators, we still have some work to do on the funding issues. I think we have been working in the right direction over the last year.

That brings me to the conversation you and I had regarding the state budget cuts in 2003. After working extensively on the funding formulas and matrix it appears we have a serious concern about the funding for charter schools during this period. In February 2003, Brock Herron (Comptroller for Aiken County) prepared a document which outlined the immediate net reduction in funding for our school in the amount \$179.78 per weighted pupil unit. On April 30, 2003 Brock prepared the final funding document based on our 135<sup>th</sup> day ADM and WPU of 184.45. This resulted in an immediate loss of \$33,160.42.

During the following school year, on November 24, 2003 Brock prepared a document for our 45<sup>th</sup> day which reflected an additional 1% budget cut of \$13.79 per student. On the 135<sup>th</sup> day in April 2004, we had a final weighted pupil unit of 319.12. This resulted in an additional loss of \$4,400.66.

I estimate that there was a total loss of \$37,561.08 over the two years which should be promptly repaid to our school. The problem is that charter schools are paid based on the prior years audited figures. That means that when we were later paid based on the 2003 audited figures the charter schools had been penalized on the front end of the budget cuts and then penalized again in the funding formula. I am asking that you recalculate my figures to verify the amounts I have included. This is certainly an issue of inequitable funding and a situation that should be resolved quickly. I am certain that other charter schools in operation during this time were similarly impacted so it may be important to review their funding during this time.



**Aiken County Public Schools  
Comptroller's Office  
1000 Brookhaven Drive  
Aiken, SC 29803  
(803) 641-2437 Fax: (803) 641-2700**

**MEMORANDUM**

**February 28, 2003**

**TO:** Ms. Lillian Thomas, Midland Valley Preparatory School  
Ms. Keisha Lloyd Kennedy, Lloyd Kennedy Charter School

**FROM:**  J. Brock Heron,  
Comptroller

**RE:** State Budget Cuts

Based on the latest information I have received, the Budget and Control Board of the State has cut the base student cost from \$2,033.00 to \$1,774.70. The net result in state funding in Aiken County is that we have received a reduction from \$1,544.85 to \$1,365.07, or net reduction of \$179.78 per weighted pupil unit. I have refigured your 45-day counts based on the new information and revised your payment schedule accordingly (which I have attached). I am also currently working with Dr. Roberson to determine and forward to you additional special revenue funding.

If you have any questions, please call.

Attachment:

**Aiken County Public Schools  
 Midland Valley Preparatory School Funding  
 Based on 45 day weighted pupil units  
 2002 - 2003**

<u>Classification</u>	<u>ADM</u>	<u>Per Pupil Weighting</u>	<u>Classification Total</u>
Kindergarten	25.18	\$ 4,933.24	\$ 124,218.98
Primary	53.09	4,705.56	249,818.18
Elementary	44.16	3,794.80	167,578.37
Educable Mentally Disabled	0.78	6,602.96	5,150.31
Learning Disabled	3.13	6,602.96	20,667.26
Speech Disabled	13.69	7,210.13	98,706.68
Visually Disabled	1.00	9,752.64	9,752.64
<b>Total WPU</b> s	141.03		<b>\$ 675,892.42</b>

**After February State Cuts**

<u>Classification</u>	<u>ADM</u>	<u>Per Pupil Weighting</u>	<u>Classification Total</u>
Kindergarten	25.18	\$ 4,699.53	\$ 118,334.18
Primary	53.09	4,482.63	237,982.78
Elementary	44.16	3,615.02	159,639.43
Educable Mentally Disabled	0.78	6,290.14	4,906.31
Learning Disabled	3.13	6,290.14	19,688.14
Speech Disabled	13.69	6,868.54	94,030.37
Visually Disabled	1.00	9,290.61	9,290.61
<b>Total WPU</b> s	141.03		<b>\$ 643,871.82</b>



Aiken County Public Schools  
Comptroller's Office  
1000 Brookhaven Drive  
Aiken, SC 29803  
(803) 641-2437 Fax: (803) 641-2700

**MEMORANDUM**

November 24, 2003

**TO:** Ms. Lilian Thomas, Director  
Midland Valley Preparatory School

**FROM:**  J. Brock Heron

**RE:** 45-day count and adjustment; 2002 - 03 audit

Based on the 45-day count for your school, we have adjusted the December payment to Midland Valley Preparatory School to \$99,437.00. This will be your monthly payment until the final 135-day count in late March. Please note that we had estimated a WPU of 384.56. You have 45 day WPU of 342.46. We have also adjusted the per WPU cost to \$3,831.97 (from \$3,845.76) to account for a 1% cut from the state in August. Please budget for any fluctuations you may anticipate between the 45<sup>th</sup> and 135<sup>th</sup> day. Your funding will be based on the 135<sup>th</sup> day count.

Also, as a reminder, your 2002 - 03 audit is due to my office on December 1, 2003.

If you have any questions, please call.

Attachments



**Aiken County Public Schools  
Comptroller's Office  
1000 Brookhaven Drive  
Aiken, SC 29803  
(803) 641-2437 Fax: (803) 641-2700**

**MEMORANDUM**

**April 30, 2003**

**TO:** Ms. Lillian Thomas, Administrator  
Midland Valley Preparatory School

**FROM:**  J. Brock Heron,  
Comptroller

**RE:** 135-day computation

After adjusting for your 135<sup>th</sup> day average daily membership (ADM), we have calculated your total payment from the district to be \$666,779.50. Enclosed is the latest computation and payment schedule for your records. While I do not anticipate any more cuts from the state from this year, I cannot guarantee that any further budget reductions will be forthcoming from them.

If you have any questions, please call.

**Cc:** Dr. Frank Roberson

**Aiken County Public Schools  
 Midland Valley Preparatory School Funding  
 Based on 135 day weighted pupil units  
 2002 - 2003**

<u>Classification</u>	<u>ADM</u>	<u>Per Pupil Weighting</u>	<u>Classification Total</u>	<u>WPU's</u>
Kindergarten	23.58	\$ 4,699.53	\$ 110,814.93	30.65
Primary	53.17	4,482.63	238,341.39	65.93
Elementary	47.20	3,615.02	170,629.11	47.20
Educable Mentally Disabled	0.93	6,290.14	5,849.83	1.62
Learning Disabled	4.67	6,290.14	29,374.96	8.13
Speech Disabled	14.92	6,868.54	102,478.68	28.35
Visually Disabled	1.00	9,290.61	9,290.61	2.57
<b>Total ADM</b>	<b>145.47</b>		<b>\$ 666,779.50</b>	<b>184.45</b>